

Technical Data Sheet



AirQon Synergies

D6 Fire and Smoke dampers

Construction

Frame: 6" Galvanized/Mild Steel/Stainless Steel, flanged/Slip frame.

Blades: Galvanized/Mild Steel/Stainless Steel, reinforced with 3 longitudinal " structurally designed Vees".

Axles: 1/2" diameter plated steel

Bushings: Bronze-self oiling.

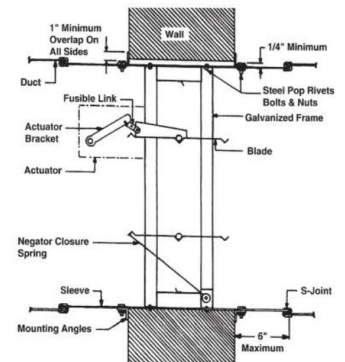
Linkage: Exposed in frame (Covered in Sheet Plate)

Mounting: vertical or Horizontal.

Actuator: Spring return 24 or 220 VAC.

Finish: Mill Galvanized.

Casing: G.I. Steel plain casing (upon request)



Installation details

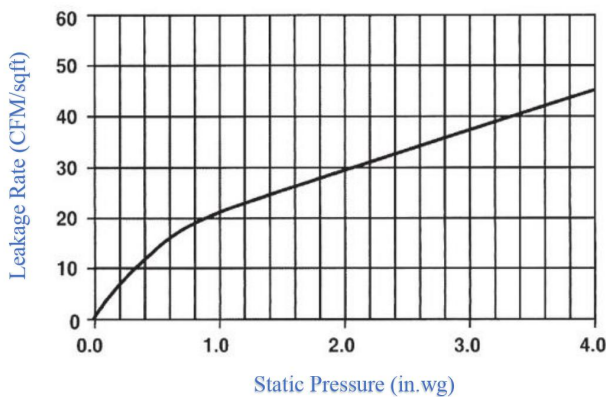
1: Minimum clearance of 1/4" shall be provided between the Damper / Damper sleeve and wall or floor openings.

2: Connect duct to the Damper / Damper sleeve by any one of SMACNA approved joints.

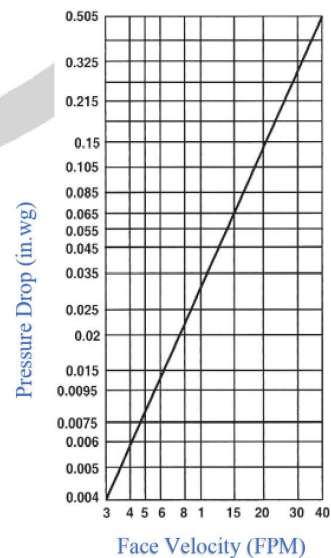
The following duct connections are used: Plain S-Slip, Bolt Corner Joints.

4: Damper sleeve shall not extend more than 6" beyond the fire wall or partition and not more than 9" on the actuator side.

Leakage Chart



Pressure Drop Chart



Pressure Drop Vs Velocity with Damper in Fully Open Position